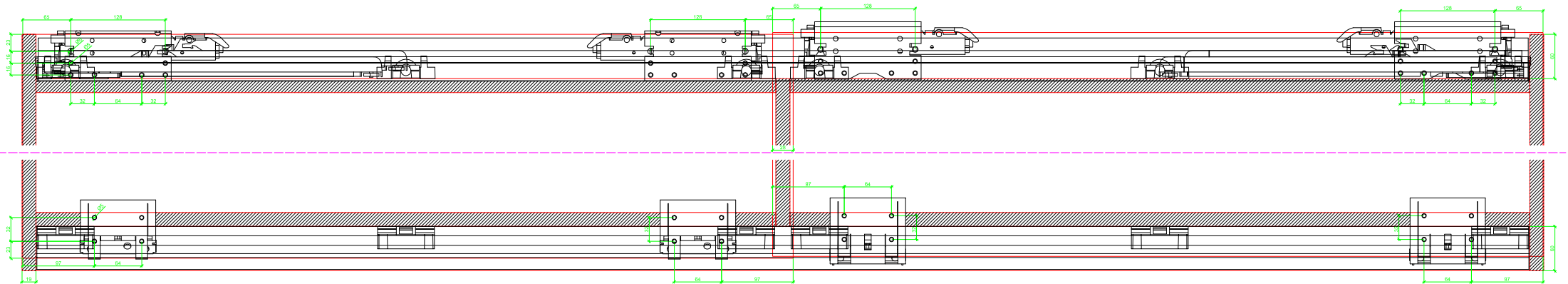


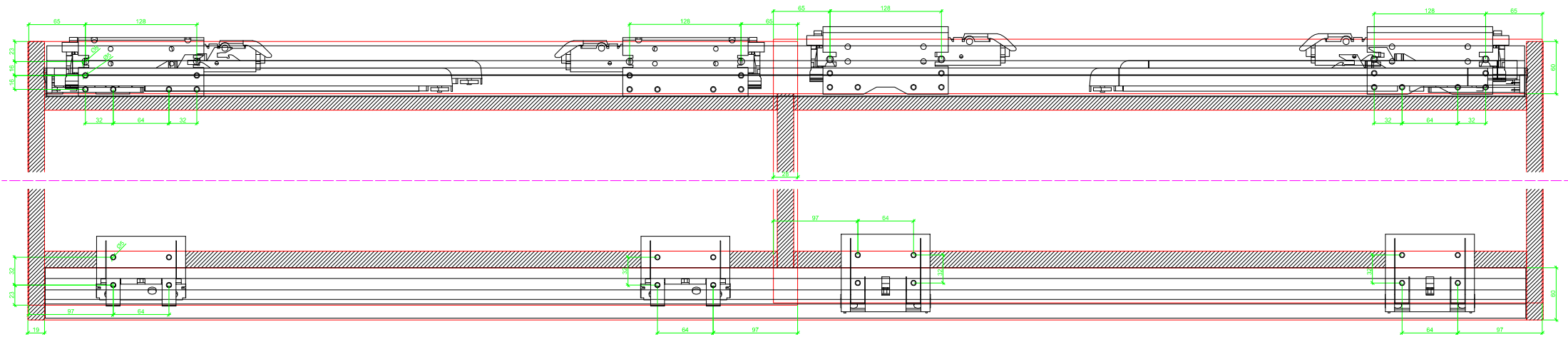
Drawings / Zeichnungen:
TopLine XL

Technik für Möbel

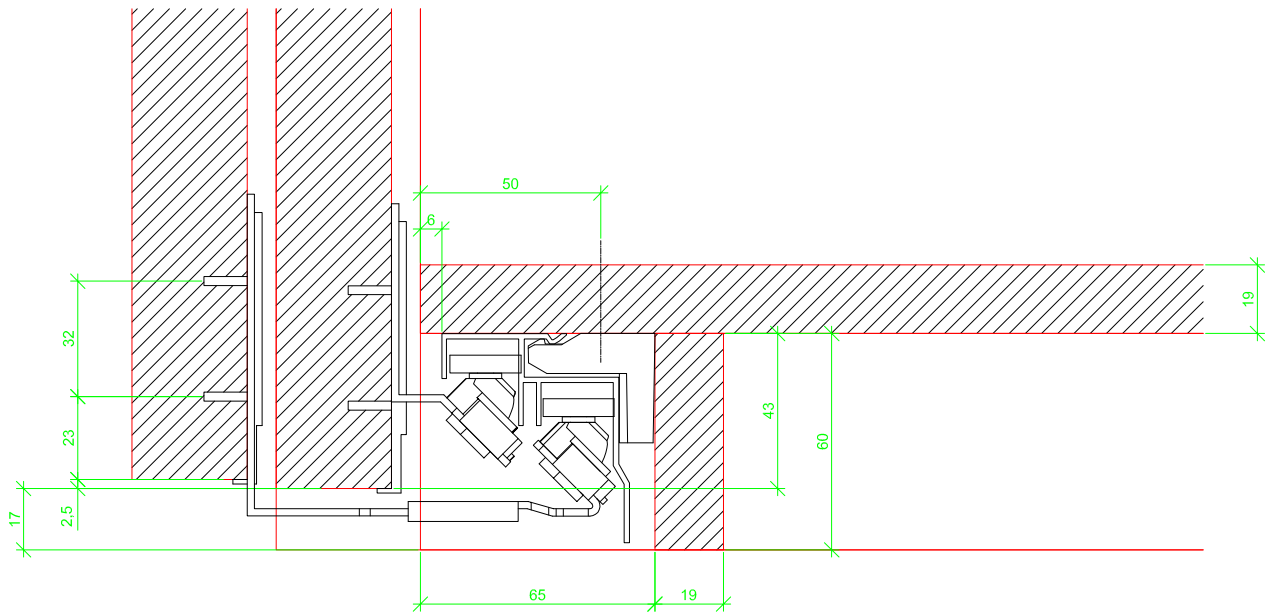
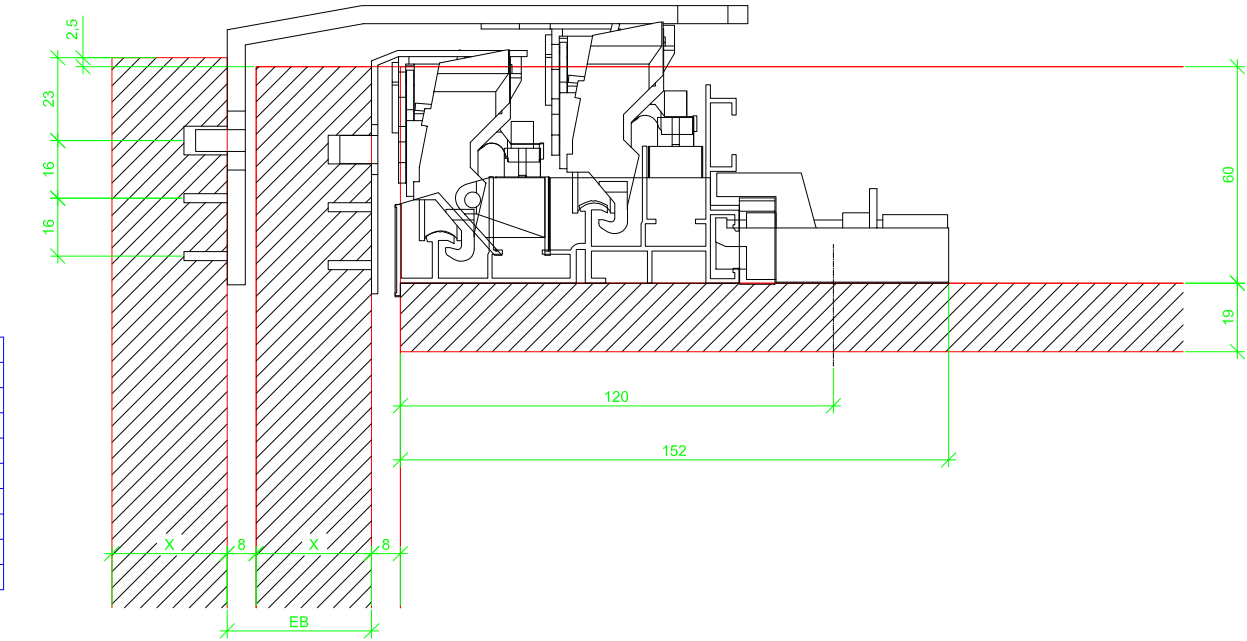

Hettich

Article / Artikel	9 275 787
Doors / Türanzahl	2
Door thickness / Türdicke	32 - 40 mm
Installed width / Einbaubreite	EB 40 - 48
Door running / Türlauf	in front of top panel / vor dem Oberboden
Bottom door guide / untere Türführung	STB 19 / 19.1





EB	X
40	32
41	33
42	34
43	35
44	36
45	37
46	38
47	39
48	40



EB	X
40	32
41	33
42	34
43	35
44	36
45	37
46	38
47	39
48	40

