



1

Connecting interface for measuring capsule meter type IST (Koax 2")

Product description:

Robust flush-mounted piece, with different pipe connection options (threaded or soldered connection) and IST interface (coax 2")

Intended use:

For mounting cold or hot water flush-mounted meters with 2" thread (interface type IST).

For installation depths from 48mm to 93mm (optimally 66mm)

Scope of delivery:

Flush-mounted piece with seal and permanently mounted cover

Plastering aid with cover and scale for plastering depth

Installation instruction

Installation of the flush-mounted housing (FMH)

1. Unpack FMH.
2. FMHs are delivered with an inserted sealing ring with a tight screwed in cover (see Fig. 1). For FMHs with threaded connection, continue with No. 3. For FMPs with soldered connection: Remove mounting aid, cover and sealing ring. Solder the connections and allow them to cool down. Insert the sealing ring into the FMP below the head thread into the groove, provided and carefully screw the cover tightly and install the mounting aid (see Fig. 2).
3. Expertly install the FMP. Make sure that the pipe installation is fixed with sound-insulated clamps, preferably at the optimum plastering depth. The optimum plastering depth is marked on the mounting aid (centre of pipe under prefabricated wall). Depths less than 48 mm require a special rosette with 40mm height.
4. Carefully test installation to ensure there is no leakage.

The latest information on the product, can also be found at www.zenner.com.

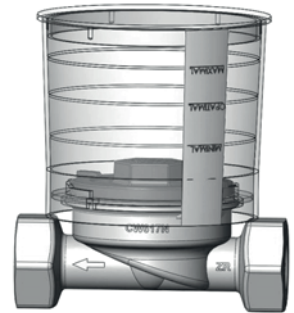


Fig. 1

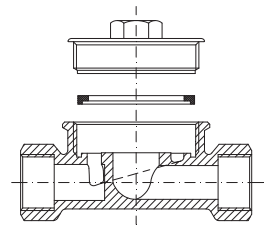
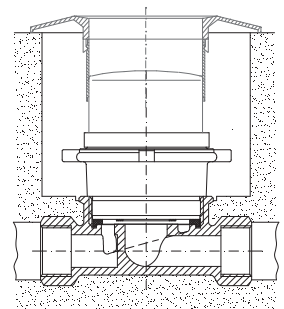


Fig. 2



ZENNER International GmbH & Co. KG

Heinrich-Barth-Straße 29 | 66115 Saarbrücken | Germany

Phone +49 681 99 676-30 E-Mail info@zenner.com
 Fax +49 681 99 676-3100 Internet www.zenner.com